

Popurrí de Navidad

2º ESO

Flauta

1 BENEDICAS VOBIS

Musical notation for the first piece, 'Benedicas Vobis', in 2/4 time. It consists of three staves of music. The first staff starts at measure 1 and ends at measure 10. The second staff starts at measure 11 and ends at measure 15. The third staff starts at measure 16 and ends at measure 21, with a first ending bracket over the final measure.

2 JIGLES BELLS

Musical notation for the second piece, 'Jigles Bells', in 2/4 time. It consists of six staves of music. The first staff starts at measure 22 and ends at measure 31. The second staff starts at measure 32 and ends at measure 40. The third staff starts at measure 41 and ends at measure 49. The fourth staff starts at measure 50 and ends at measure 59. The fifth staff starts at measure 60 and ends at measure 69. The sixth staff starts at measure 70 and ends at measure 74, with a tempo marking of ♩ = 160 and a 3/4 time signature change at the end.

3 WE WISH YOU A MERRY CHRISTMAS

Musical notation for the third piece, 'We Wish You a Merry Christmas', in 3/4 time. It consists of one staff of music starting at measure 70, with a first ending bracket over the entire staff and a '3' below it.

73

Musical staff for measures 73-80, featuring a melodic line in treble clef with a key signature of one flat and a 2/4 time signature.

81

Musical staff for measures 81-88, continuing the melodic line in treble clef with a key signature of one flat and a 2/4 time signature.

90

Musical staff for measures 90-96, concluding the section with a double bar line and a 2/4 time signature.

**LA VIRGEN LAVA PAÑALES
LOS PECES EN EL RIO**

97 4 ♩ = 100

Musical staff for measures 97-105, starting with a 4-measure rest and a tempo marking of ♩ = 100. The key signature is one flat and the time signature is 2/4.

106

Musical staff for measures 106-114, continuing the melody in treble clef with a key signature of one flat and a 2/4 time signature.

115

Musical staff for measures 115-122, continuing the melody in treble clef with a key signature of one flat and a 2/4 time signature.

123 ♩ = 120

Musical staff for measures 123-130, concluding the section with a double bar line and a tempo marking of ♩ = 120.

LA MARIMORENA

131 5 4

Musical staff for measures 131-141, starting with a 5-measure rest and a tempo marking of ♩ = 100. The key signature is one flat and the time signature is 2/4.

142

Musical staff for measures 142-150, continuing the melody in treble clef with a key signature of one flat and a 2/4 time signature.

151 ♩ = 100 ♩ = 90

Musical staff for measures 151-158, concluding the section with a double bar line and a tempo marking of ♩ = 100 ♩ = 90. The key signature is one flat and the time signature is 3/4.

NOCHE DE PAZ

160 $\boxed{6}$ ♩ = 80
3

171

179 2

ARRE BURRO

188 $\boxed{7}$ ♩ = 120
2

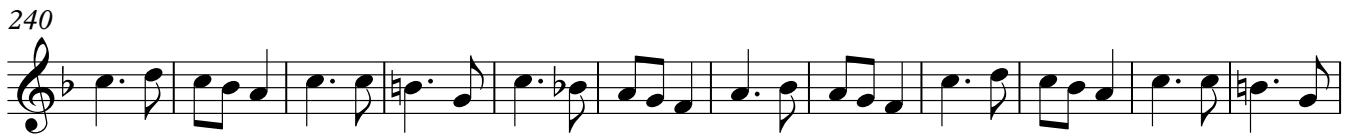
194

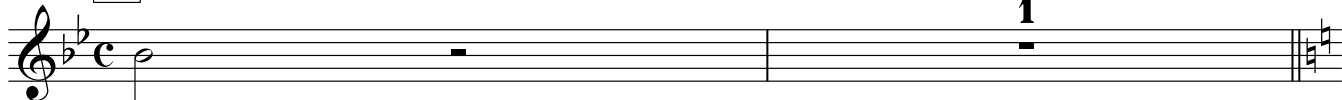
199

203 1

208

212 $\frac{2}{4}$

215 **8 CAMPANA SOBRE CAMPANA**261 **9 YA VIENEN LOS REYES MAGOS****CAMPANILLEROS**287 **10** ♩ = 140

313 **11 CAMPANILLEROS**351 **12 FUM FUM**360 **13 GATATUMBA**376 **14**

378 **WHITE CHRISTMAS**

ritard.

JINGLE BELL ROCK

408 15 ♩ = 135

436



441



445



449

